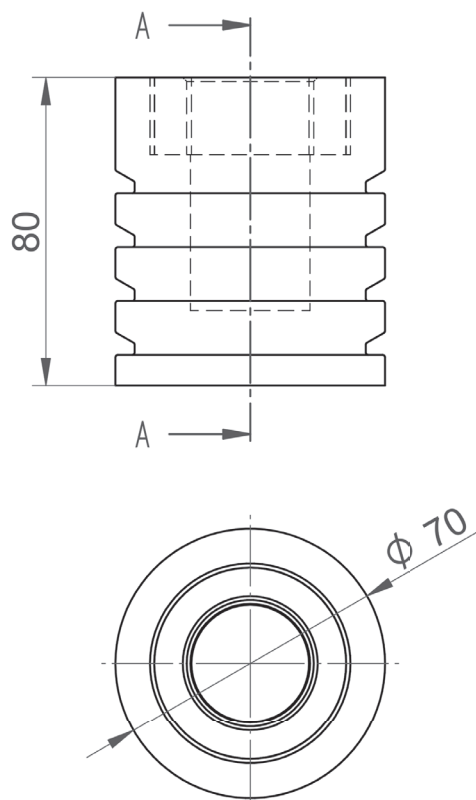


LOXrail® floor sleeve

Art. No. 480213 Drawing No. 16002-0620

LOXrail® floor sleeve for 30mm diameter bolt

- For fixation of trolleys at fix positions
- Spring loaded lid seals the sleeve when not in use

• Deadweight: 1,542 kg

Technical data are subject to changes and errors. Only current article drawings are relevant.